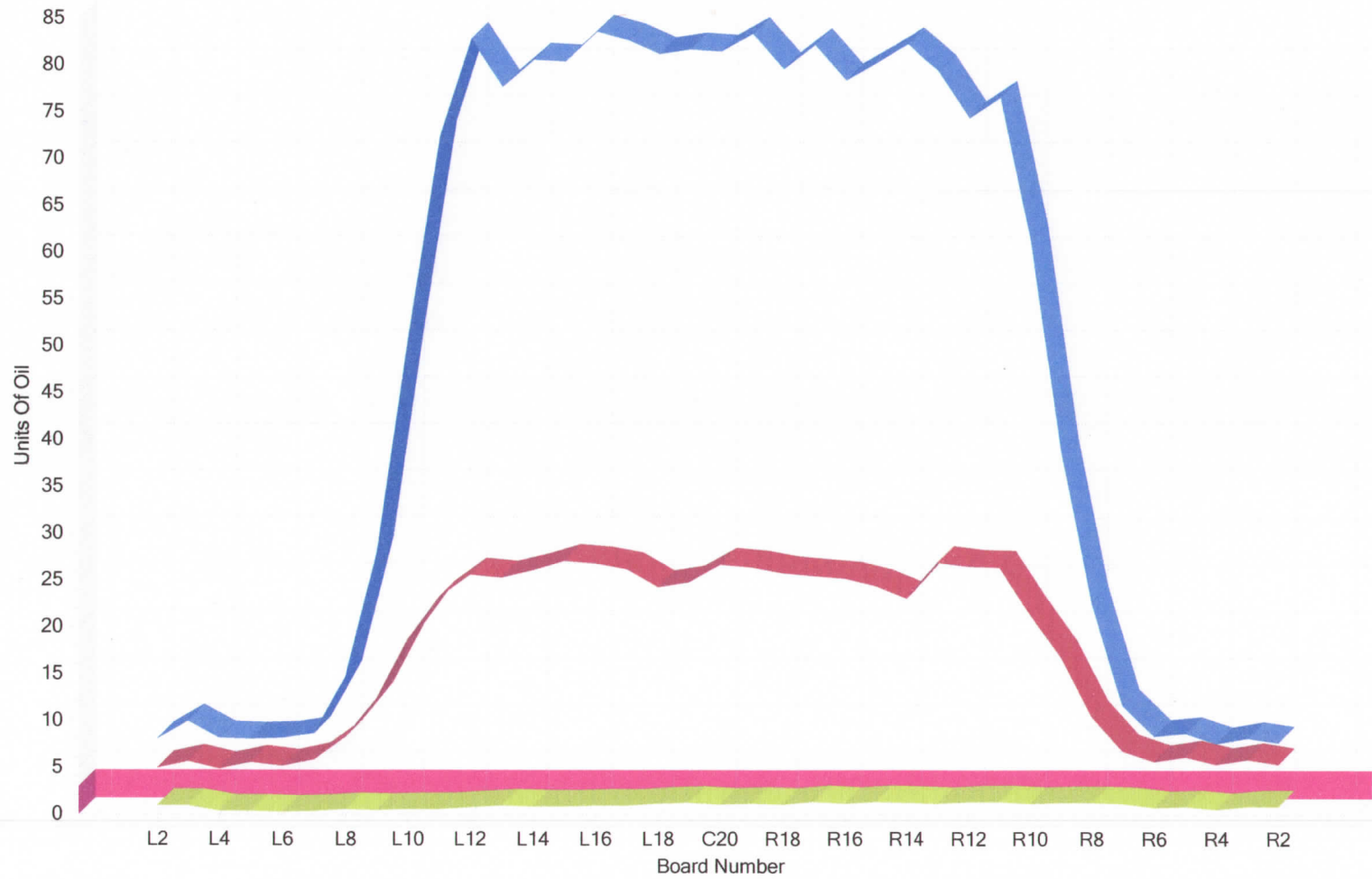


Brunswick Computer Lane Monitor™ Lane Dressing Analysis System

| | Center Name | Lane # | Distance | Date | Comment |
|---|---------------|--------|----------|----------|---------|
| 1 | New Hope Bowl | 15 | 39.0 | 1/3/2012 | |
| 2 | New Hope Bowl | 15 | 44.0 | 1/3/2012 | |
| 3 | New Hope Bowl | 15 | 15.0 | 1/3/2012 | |



| | 1 | 2 | 3 |
|-----|------|-----|------|
| L2 | 5.0 | 1.0 | 8.1 |
| L3 | 5.7 | 1.0 | 10.0 |
| L4 | 4.9 | 0.4 | 8.2 |
| L5 | 5.6 | 0.4 | 8.1 |
| L6 | 5.2 | 0.3 | 8.2 |
| L7 | 5.9 | 0.4 | 8.7 |
| L8 | 8.3 | 0.6 | 14.7 |
| L9 | 12.4 | 0.5 | 27.9 |
| L10 | 18.7 | 0.6 | 50.8 |
| L11 | 23.2 | 0.6 | 72.4 |
| L12 | 25.6 | 0.8 | 82.8 |
| L13 | 25.3 | 1.0 | 77.7 |
| L14 | 26.1 | 0.9 | 80.6 |
| L15 | 27.1 | 0.9 | 80.4 |
| L16 | 26.8 | 1.0 | 83.6 |
| L17 | 26.2 | 1.0 | 82.7 |
| L18 | 24.3 | 1.2 | 81.2 |
| L19 | 24.8 | 1.3 | 81.7 |
| C20 | 26.7 | 1.1 | 81.5 |
| R19 | 26.4 | 1.2 | 83.4 |
| R18 | 25.8 | 1.1 | 79.6 |
| R17 | 25.5 | 1.4 | 82.2 |
| R16 | 25.2 | 1.2 | 78.4 |
| R15 | 24.4 | 1.4 | 80.3 |
| R14 | 23.1 | 1.3 | 82.3 |
| R13 | 26.9 | 1.2 | 79.4 |
| R12 | 26.5 | 1.4 | 74.4 |
| R11 | 26.4 | 1.4 | 76.6 |
| R10 | 21.4 | 1.2 | 61.4 |
| R9 | 16.8 | 1.3 | 38.8 |
| R8 | 10.5 | 1.3 | 22.7 |
| R7 | 6.8 | 1.2 | 11.7 |
| R6 | 5.7 | 0.8 | 8.4 |
| R5 | 6.2 | 0.9 | 8.7 |
| R4 | 5.4 | 0.6 | 7.6 |
| R3 | 5.9 | 0.9 | 8.2 |
| R2 | 5.4 | 0.9 | 7.7 |

First Tape Reading
10 Pin Side

7 Pin Side